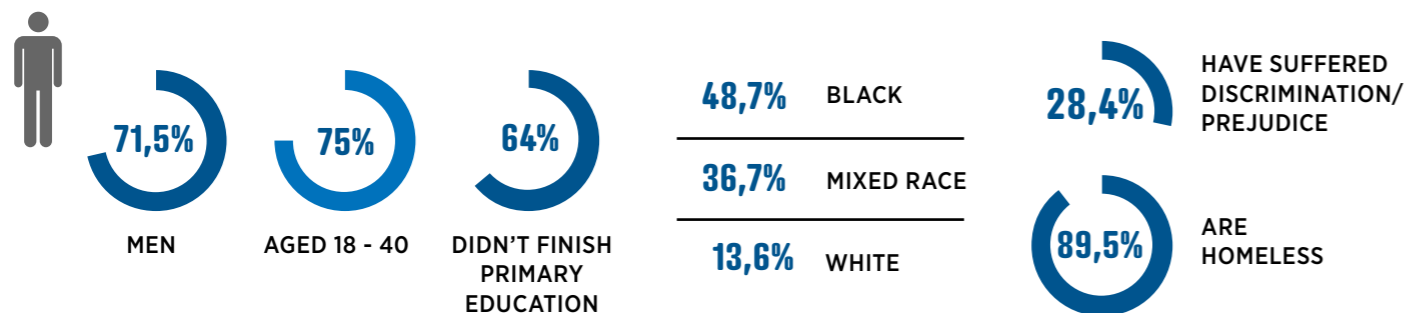


# REGULAR USERS OF MARÉ'S OPEN-USE DRUG SCENES

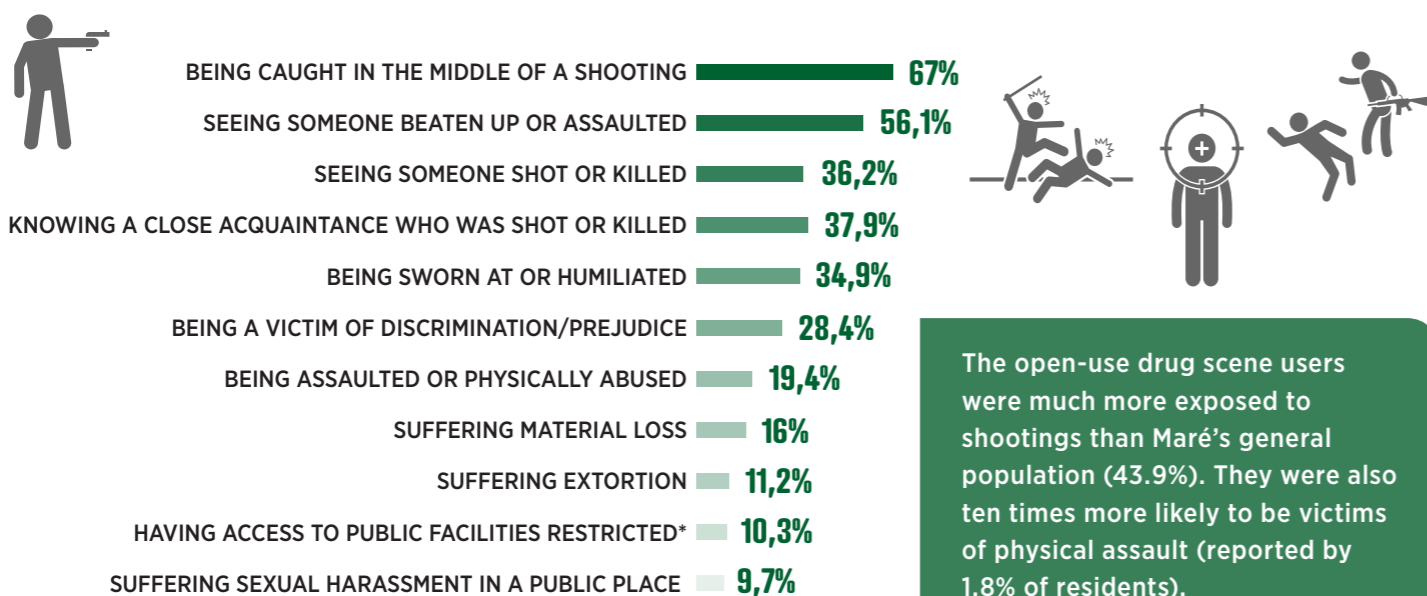
## PROFILE

The research interviewed 200 regular users of the open-use drug scenes.



## VIOLENCE

### EXPERIENCES ENDURED IN THE LAST 12 MONTHS

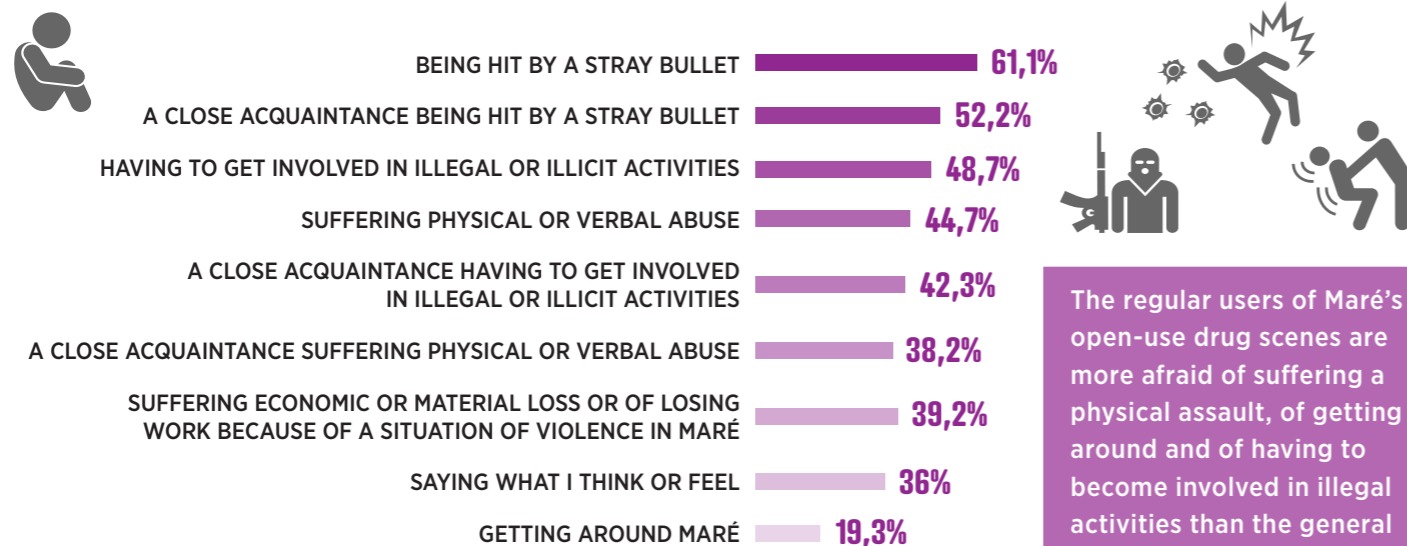


The open-use drug scene users were much more exposed to shootings than Maré's general population (43.9%). They were also ten times more likely to be victims of physical assault (reported by 1.8% of residents).

\*Restriction to oneself or a family member, due to violence

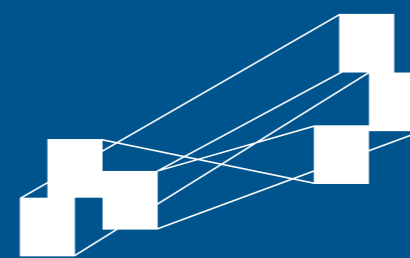
## FEARS

### BIGGEST FEARS WHEN IN MARÉ



The regular users of Maré's open-use drug scenes are more afraid of suffering a physical assault, of getting around and of having to become involved in illegal activities than the general population.

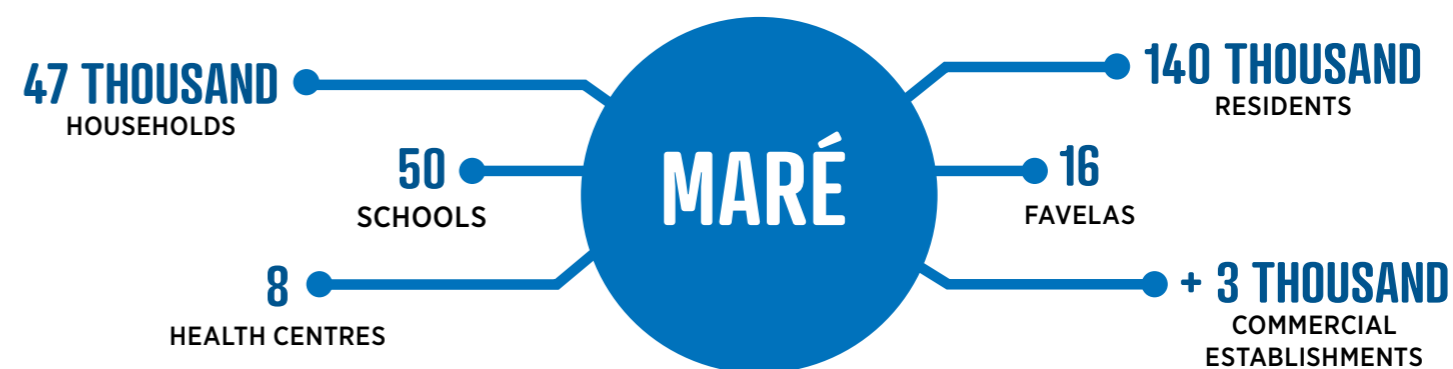
Source: Building the Barricades research data, 2019-2020



# BUILDING THE BARRICADES

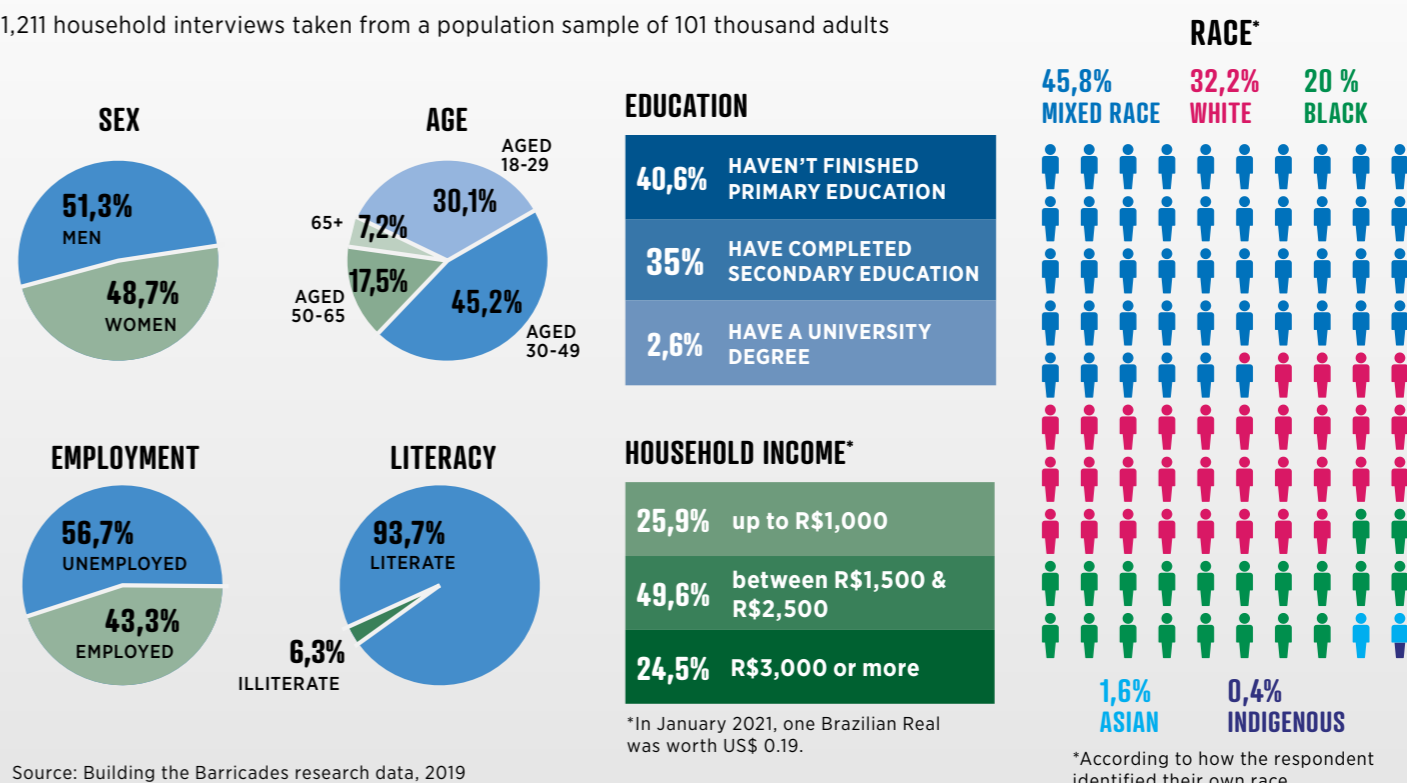
Mental health, violence, culture and resilience in Maré

Carried out between 2018 and 2020, this is the first ever research project undertaken that focuses on the impact of violence on mental health in favelas.



## RESIDENTS' PROFILES

1,211 household interviews taken from a population sample of 101 thousand adults



Source: Building the Barricades research data, 2019

\*In January 2021, one Brazilian Real was worth US\$ 0.19.

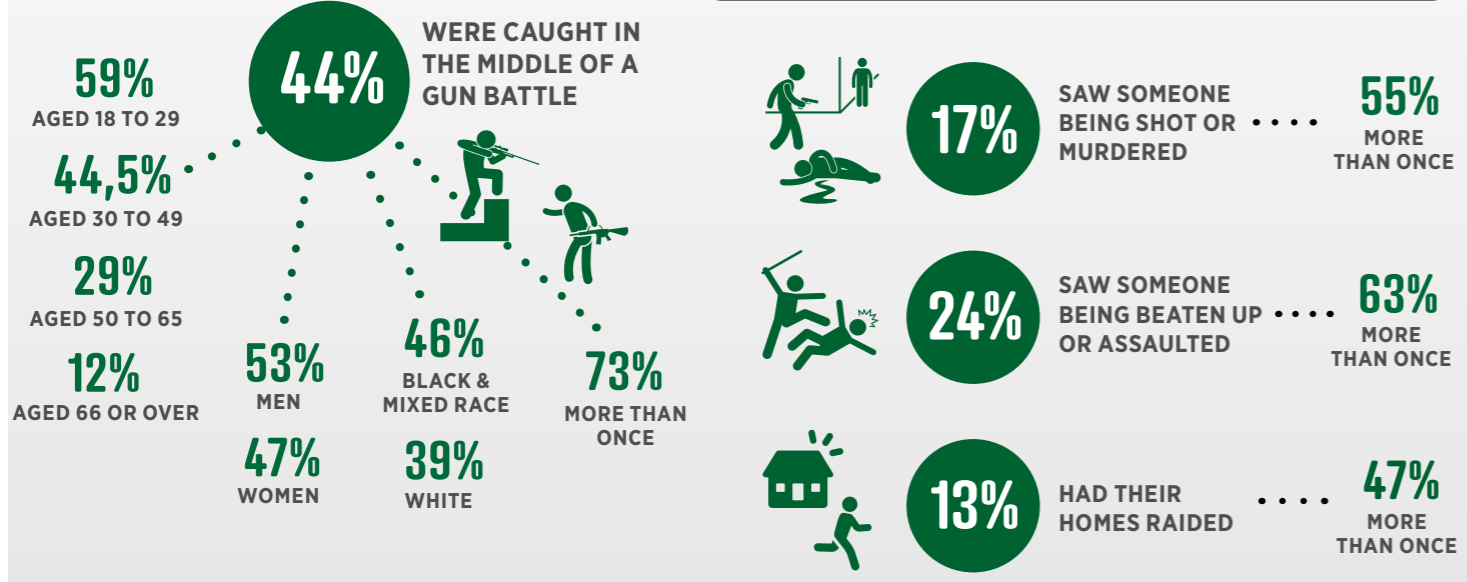
\*According to how the respondent identified their own race

Building the Barricades is the result of a partnership between People's Palace Projects and Redes da Maré, together with the Queen Mary, University of London, the Social Services Faculty and the Institute of Psychiatry of the Federal University of Rio de Janeiro/UFRJ, and the Centre for Studies in the Economics of Culture from the Federal University of Rio Grande do Sul/UFRGS, with the support of the Economic and Social Research Council and the Arts and Humanities Research Council, through the Global Challenges Research Fund.

# ARMED VIOLENCE

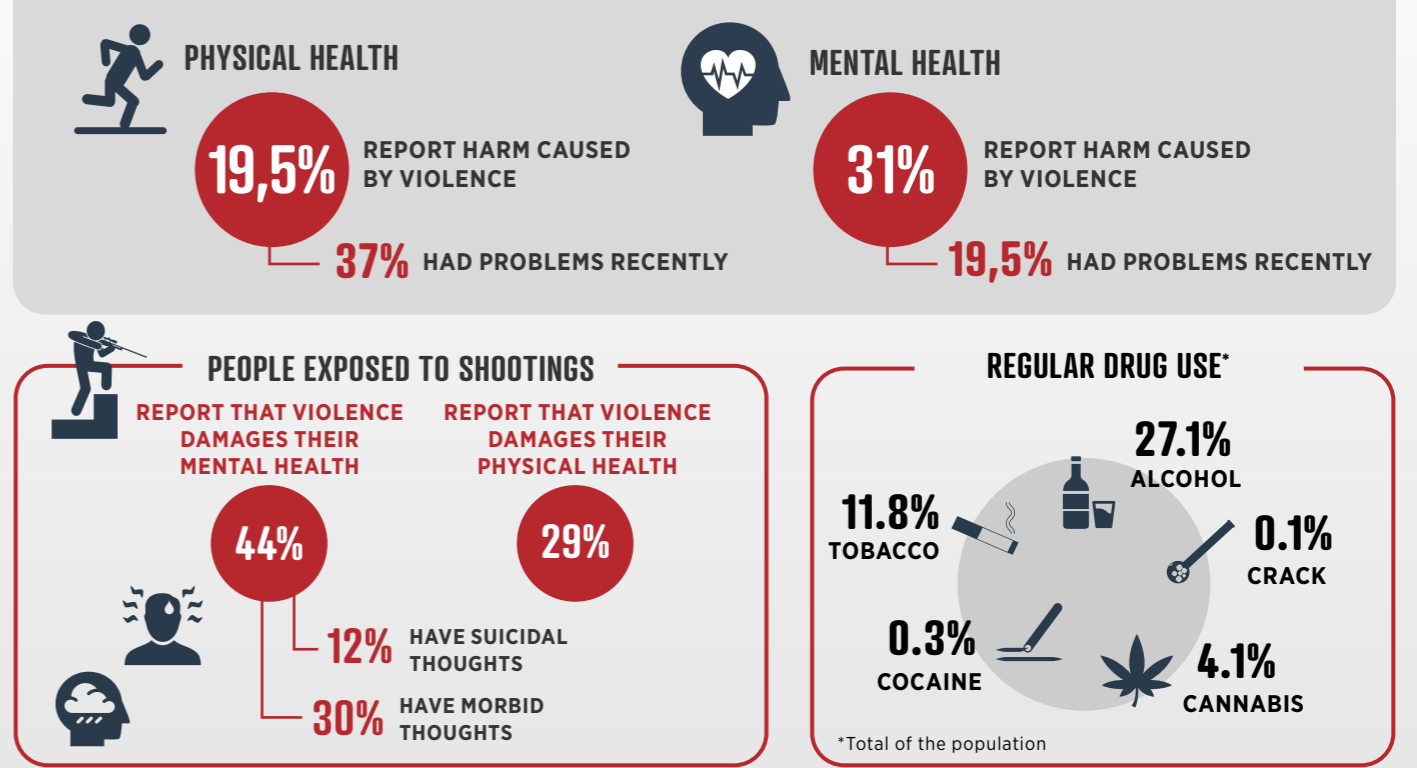
The experiences of armed violence for adult residents in the 12 months prior to the research:

AT SOME TIME IN THEIR LIFE, MORE THAN **25,5%** KNEW A CLOSE ACQUAINTANCE WHO WAS INJURED OR MURDERED



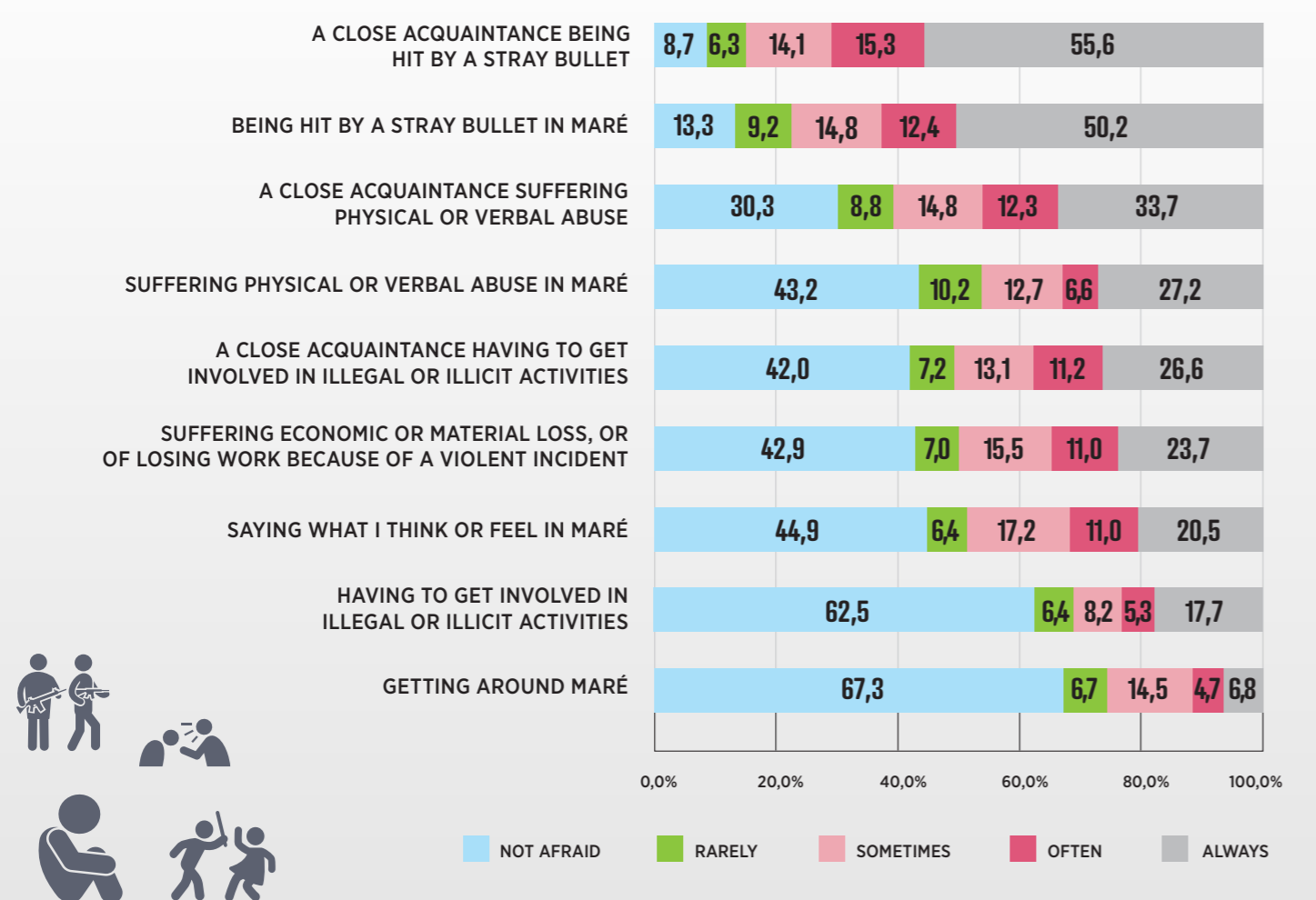
Source: Building the Barricades research data, 2019

# HEALTH



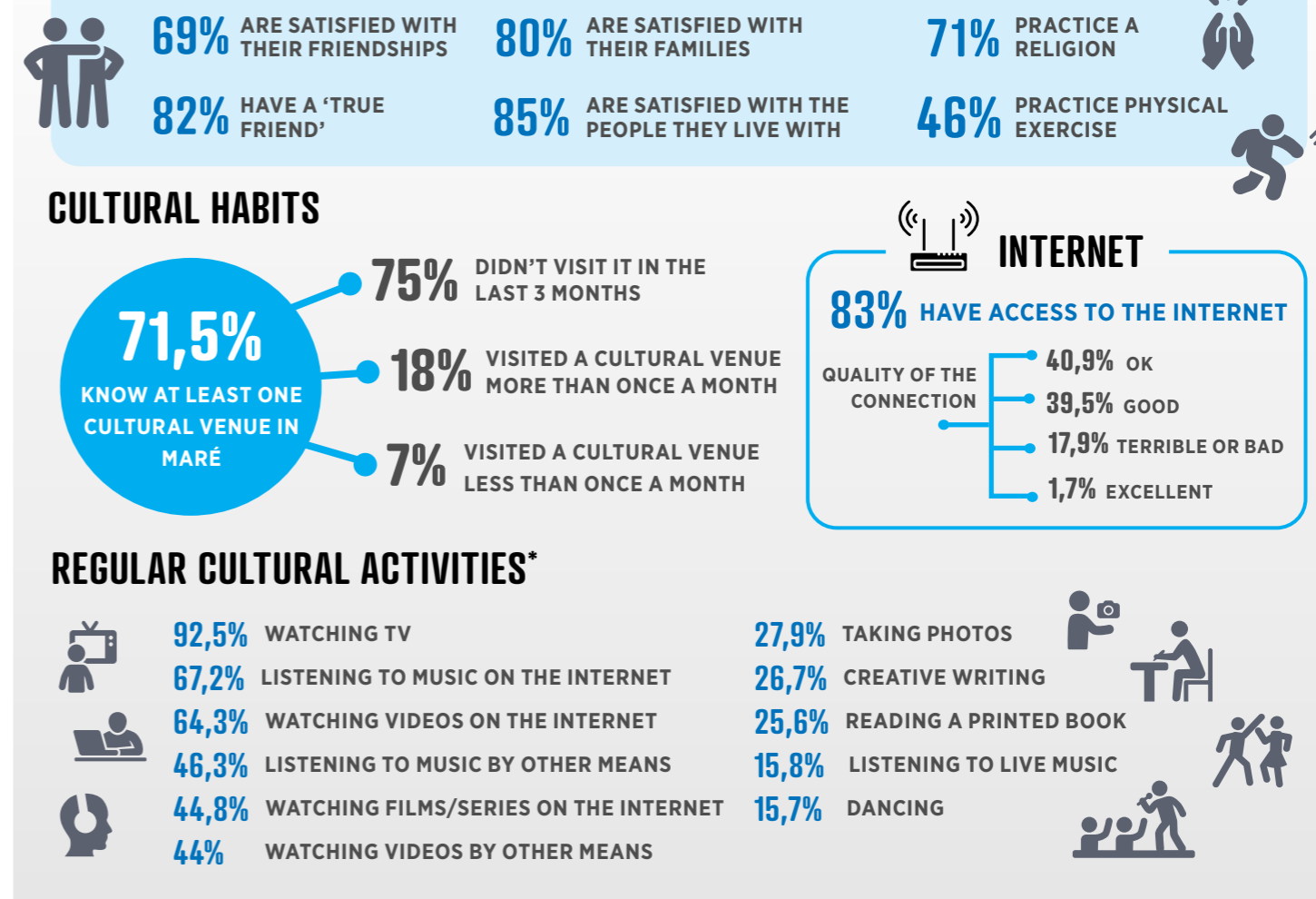
Source: Building the Barricades research data, 2019

# FEAR THE MOST COMMON FEARS



Source: Building the Barricades research data, 2019

# FACTORS OF RESILIENCE



\*Practiced daily or weekly by adults in Maré

Source: Building the Barricades research data, 2019